

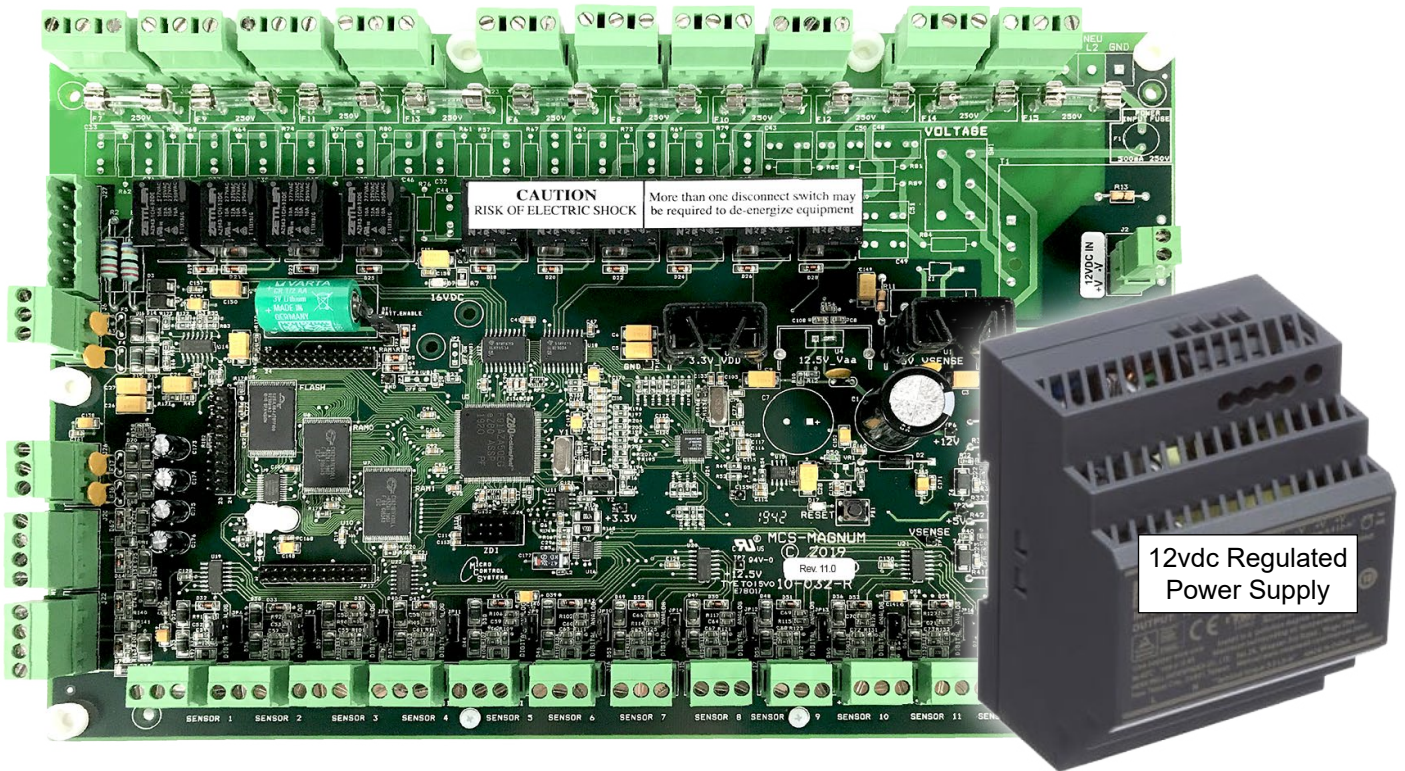


Providing HVAC/R Control Solutions Worldwide

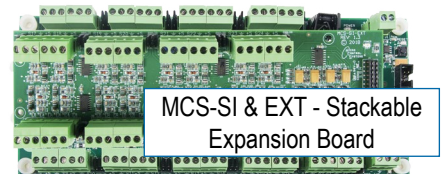
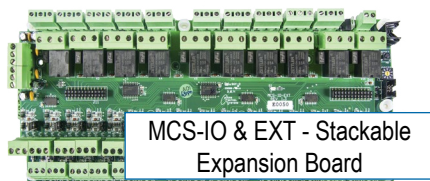
5580 Enterprise Pkwy., Fort Myers, FL 33905  
Office: 239-694-0089 Fax: 239-694-0031  
www.mcscontrols.com

Build your new Chiller with more Relays and Sensors, less footprint needed . . .

# New Magnum +12vdc Controller



## Stackable Expansion Boards Reduce Footprint

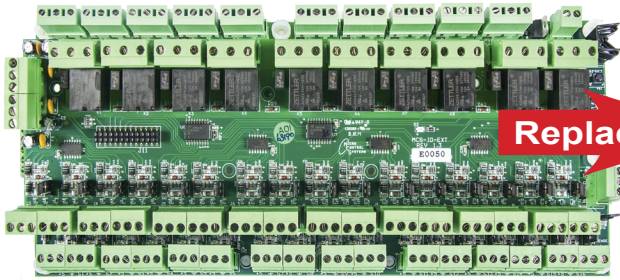


- **Single power supply - for Touchscreen, Magnum, and Expansion Boards.**
- **New IO board reduces footprint = lower OEM manufacturing costs.**
- **Stackable boards allows for greater expansion in less space.**

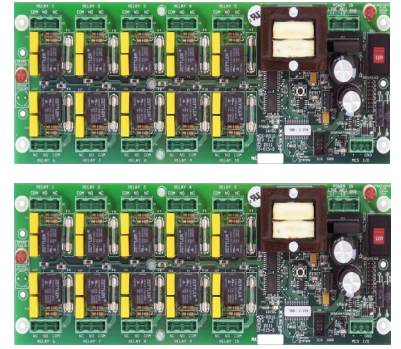
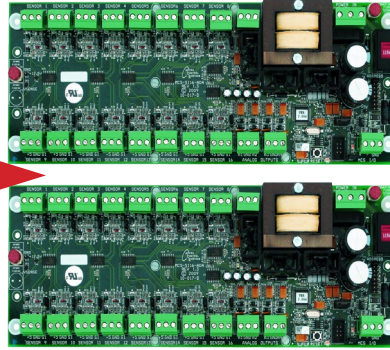


# Stackable Expansion Boards - Reduces Footprint Needed

*New*



**Replaces**



## MCS-IO Stackable Expansion Board

32 Sensor Inputs - 8 Analog Outputs - 20 Relay Outputs  
Footprint reduced as shown

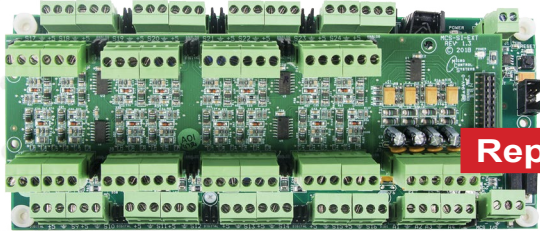
## MCS-SI16-A04

16 Sensor Inputs - 4 Analog Outputs  
Per board

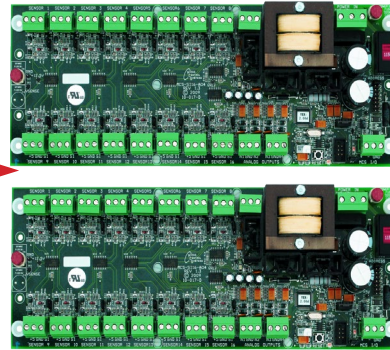
## MCS-RO10

10 Relay Outputs  
Per board

*New*



**Replaces**



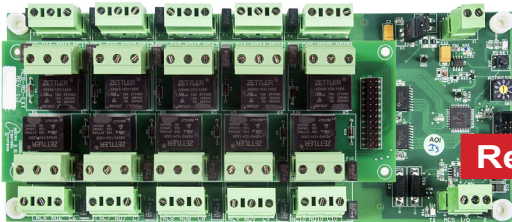
## MCS-SI16-A04

16 Sensor Inputs  
4 Analog Outputs  
Per board

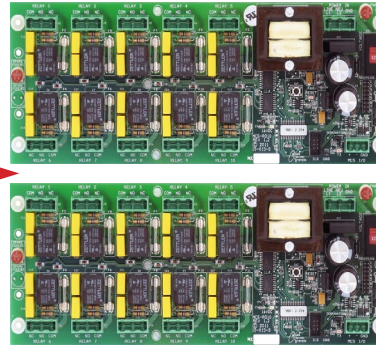
## MCS-SI Stackable Expansion Board

32 Sensor Inputs - 8 Analog Outputs  
Footprint reduced as shown

*New*



**Replaces**



## MCS-RO10

10 Relay Outputs  
Per board

## MCS-RO Stackable Expansion Board

20 Relay Outputs  
Footprint reduced as shown



The MCS-12V-90W is used to power MCS 12V products including the MCS-MAGNUM-N-12, 12V Expansion boards and MCS-TOUCHSCREENS.